

TERRAZZONE

TERRAZO CONTINUO

Description

Mineral mortar that simulates terrazzo formulated with acrylic resins, additives and minerals selected to provide high mechanical and chemical performance with low VOC emissions. TERRAZZONE is a highly decorative continuous coating for professionals: ready to use, flexible, resistant and waterproof. It can be applied to practically any consolidated surface.

Properties

- Continuous covering (always respect expansion joints if any)
- Applicable on practically any type of support: concrete, cement, ceramics, plaster, plasterboard, etc.
- Excellent workability
- High adhesion to the support
- Does not yellow over time or UV
- Applicable indoors and outdoors

Technical Data

	TERRAZZONE
Material consume	0,65 Kg/m ²
Layer thickness	1 mm
Adhesion Strength	>1,5 N/mm ²
Taber wear resistance (CS17, 1000g, 1000c)	74
Compression Resistance	>50 N/mm ²
Slip resistance	Class 1



Personalization

TERRAZZONE is a continuous terrazzo option that offers a wide range of customization possibilities. With the ability to choose the base color from any of the ONEROCK shades, and the chips available in four options: fire, water, mountain and granite. TERRAZZONE combines the durability of microcement with the flexibility of personalized design, allowing you to create unique and attractive surfaces for any architectural or interior design project.



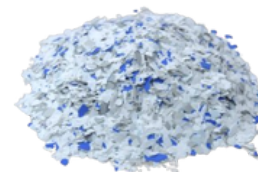
granite



fire

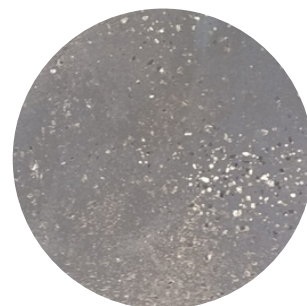
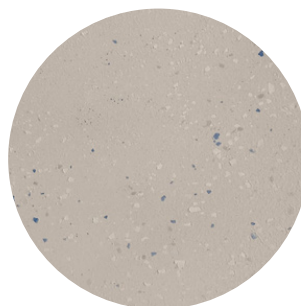


mountain



water

The options are unlimited, allowing the creation of personalized surfaces according to specific needs.



Step by Step

Preparation of the support.

All surfaces must be clean, dry, level and bonded.

Apply PRIMER or PRIMERQUARTZ primer, wait at least 30 minutes. If necessary, use primers from the PREPOX range.

If the substrate is wet, consult Lunik technical personnel.

On tiles and other coverings with joints, it will be necessary to cover these joints previously with ONEROCK and allow them to dry for a minimum of 24 hours before applying the primer.

Apply 1 layer of ONEROCK XL/L, applying some pressure with the trowel.

Tool: Metal trowel

Wait 8-12 hours

Sanded each layer with 24 or 40 grit and vacuumed the surface.

Apply 1 layer of TERRAZZONE using little pressure with the trowel, reducing the application angle to ensure a 1mm thick layer.

Tool: Metal trowel

Wait 6-8 hours

Sanded with 40 grit and vacuumed the surface.

Application of VARNISH W water-based aliphatic polyurethane (5:1)

Tool: Roller

NOTE: Drying times are calculated at a temperature of 20°C and a maximum relative humidity of 60%. Adapt times to environmental conditions.

IMPORTANT: Apply the layers with minimum thickness, and always wait until they dry to proceed with the next step. Promote air flow for optimal drying.

Warnings

- Do not use the product with temperatures lower than 0°C and higher than 30°C and humidity higher than 80%.
- Close the container correctly after each use.
- Do not add water or additives to the product without consulting.
- Avoid solid remains falling into the container in case of subsequent use of the product.
- Always make thin layers to ensure good curing of the product.
- In exterior applications, avoid rain when the layers have not cured.
- The curing time of the product is 7 days although it is walkable after 24 hours.

Special Precautions

In case of contact with eyes, rinse with plenty of water for 15 minutes. In case of contact with skin, wash with soap and water. Do not eat. If swallowed, do not cause vomiting and seek medical attention immediately. It is recommended to comply with the following measures:

- Good ventilation
- Protective glasses to avoid splashes
- Rubber gloves

Cleaning and Storage

Tools should be cleaned with water immediately after use. Once the material has hardened, it can only be removed by mechanical means.

The product should be stored in its original container, closed and protected from the elements, at temperatures between 10°C and 30°C, in a dry and well-ventilated place, away from heat sources and direct sunlight. The use time is 1 year from the date of manufacture, properly preserved.

www.lunik.cc

Calle Benifaió 38, Guadassuar (Valencia)
CP 46610 Spain
Tel. +34 96 116 38 84